

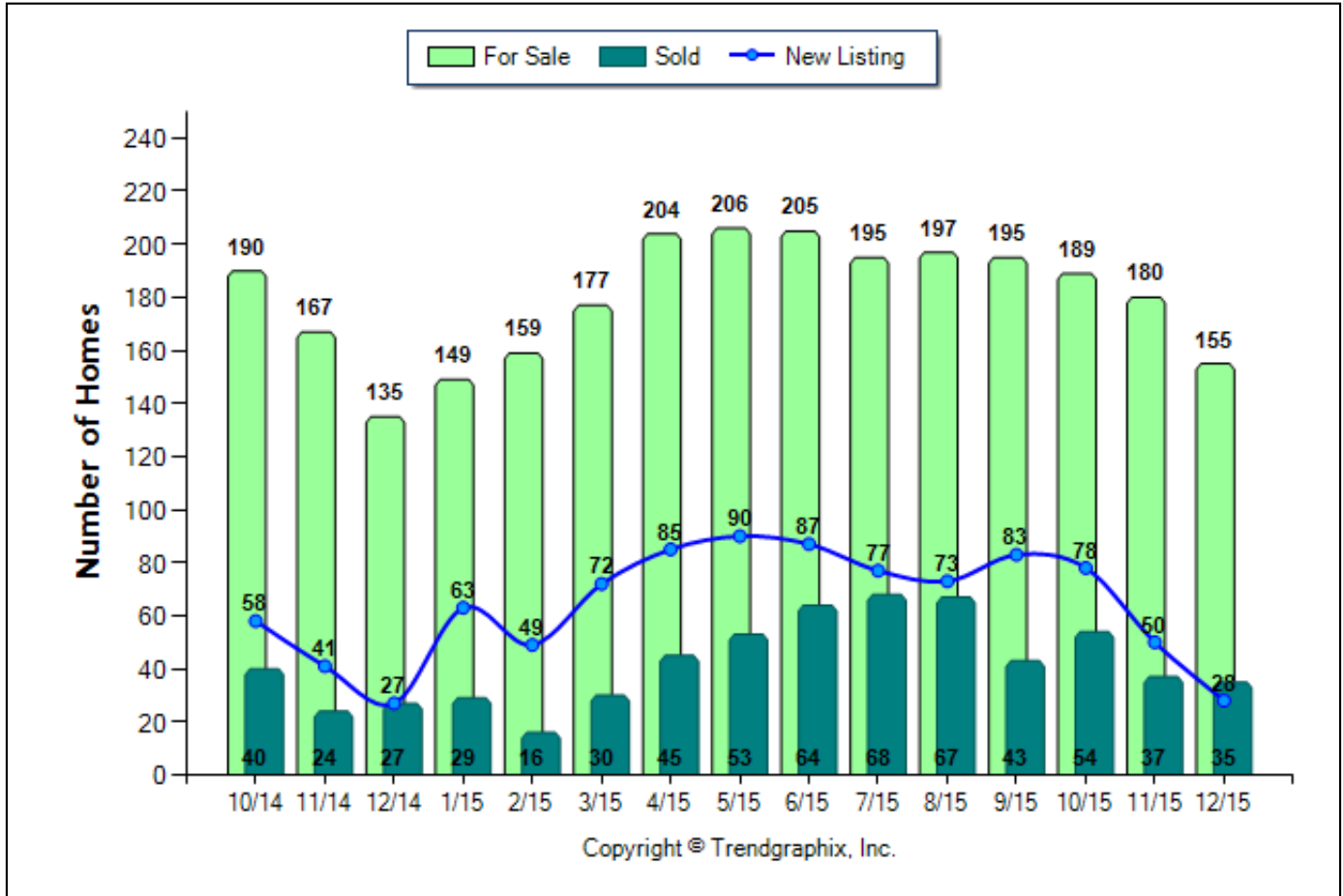
Facts and TrendsTM - Published January 2016*

Location: 9-Sumner County
Property Types: Site Built - Resale/Existing - All Properties - All Lot Sizes
Price Range: \$250,000 - \$349,999
Full Baths: 0 - No Limit

SQFT Range: 0 - No Limit
Half Baths: 0 - No Limit

Bedrooms: 0 - No Limit
Year Built: 0 - No Limit

Number of Homes For Sale vs. Sold vs. New Listing (Oct. 2014 - Dec. 2015)



	Curnt vs. Prev Month			Curnt vs. Same Month 1 Yr Ago			Curnt vs. Same Qtr 1 Yr Ago		
	Dec. 15	Nov. 15	% Change	Dec. 15	Dec. 14	% Change	Oct. 15 to Dec. 15	Oct. 14 to Dec. 14	% Change
For Sale	155	180	-13.9% ▼	155	135	14.8% ▲	524	492	6.5% ▲
New Listing	28	50	-44% ▼	28	27	3.7% ▲	156	126	23.8% ▲
Sold	35	37	-5.4% ▼	35	27	29.6% ▲	126	91	38.5% ▲

December 2015 is a Neutral market**

Home For Sale in December 2015 is 155 units. It is down **13.9%** compared to the last month and up **14.8%** compared to the last year.

Home Listed in December 2015 is 28 units. It is down **44%** compared to the last month and up **3.7%** compared to the last year.

Home Closed in December 2015 is 35 units. It is down **5.4%** compared to the last month and up **29.6%** compared to the last year.

**Buyer's market: more than 6 months of inventory based on closed sales. Seller's market: less than 3 months of inventory based on closed sales. Neutral market: 3 - 6 months of inventory based on closed sales.

All reports are published January 2016, based on data available at the end of December 2015. All reports presented are based on data supplied by the MTRMLS. MTRMLS does not guarantee or is not in anyway responsible for its accuracy. Data maintained by the MTRMLS may not reflect all real estate activities in the market. Information deemed reliable but not guaranteed.

Facts and TrendsTM - Published January 2016*

Location: 9-Sumner County

Property Types: Site Built - Resale/Existing - All Properties - All Lot Sizes

Price Range: \$250,000 - \$349,999

Full Baths: 0 - No Limit

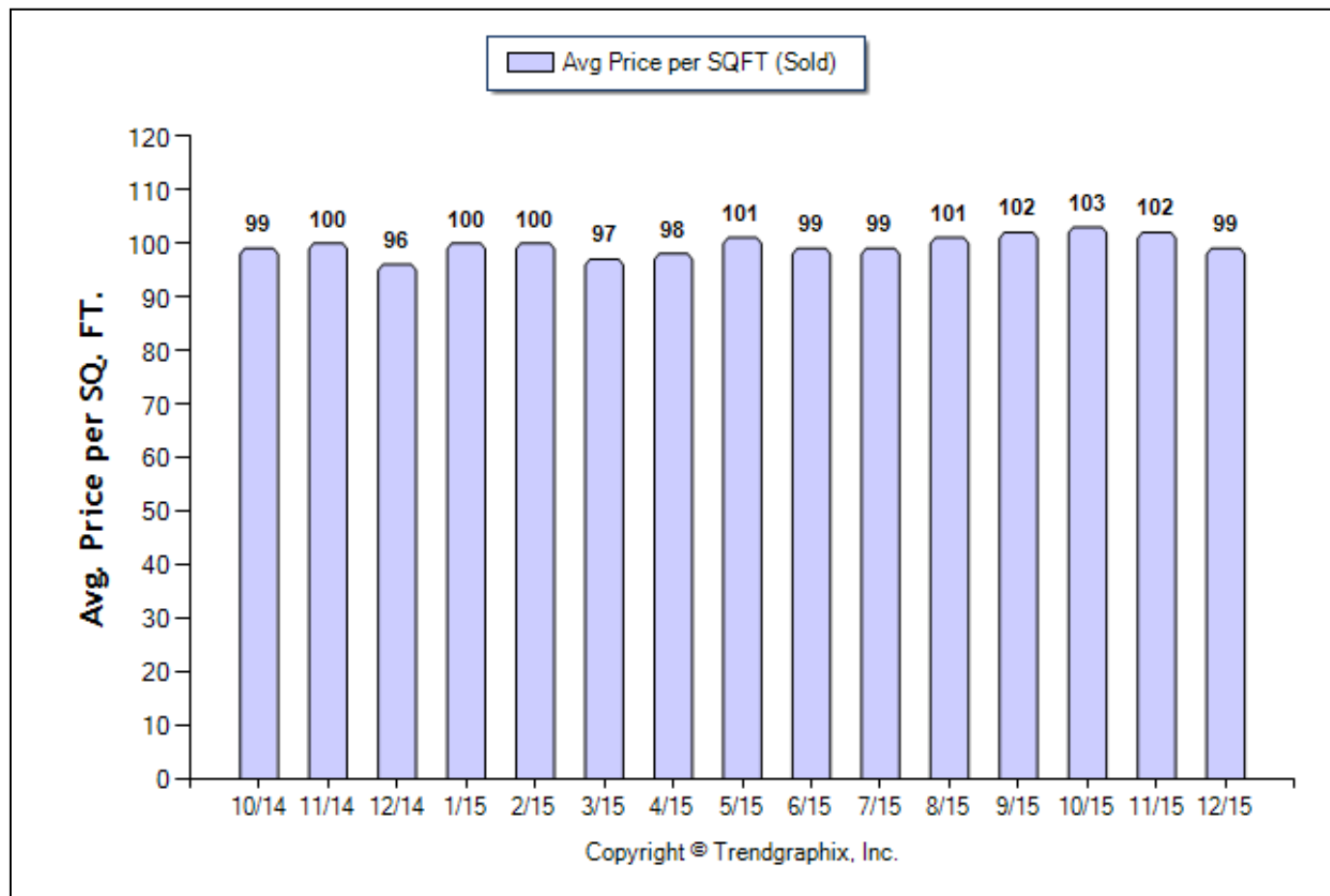
SQFT Range: 0 - No Limit

Half Baths: 0 - No Limit

Bedrooms: 0 - No Limit

Year Built: 0 - No Limit

Average Price per SQFT (Sold) (Oct. 2014 - Dec. 2015)



	Curnt vs. Prev Month			Curnt vs. Same Month 1 Yr Ago			Curnt vs. Same Qtr 1 Yr Ago		
	Dec. 15	Nov. 15	% Change	Dec. 15	Dec. 14	% Change	Oct. 15 to Dec. 15	Oct. 14 to Dec. 14	% Change
Avg. Sq. Ft. Price (Sold)	99	102	-2.9% ▼	99	96	3.1% ▲	101.6	98.37	3.3% ▲

December 2015 Average Sold Price per Square Footage is Neutral**

Average Sold Price per Square Footage in December 2015 is \$99. It is down **2.9%** compared to the last month and up **3.1%** compared to the last year.

**Based on 6 month trend - Appreciating/Depreciating/Neutral.

All reports are published January 2016, based on data available at the end of December 2015. All reports presented are based on data supplied by the MTRMLS. MTRMLS does not guarantee or is not in anyway responsible for its accuracy. Data maintained by the MTRMLS may not reflect all real estate activities in the market. Information deemed reliable but not guaranteed.

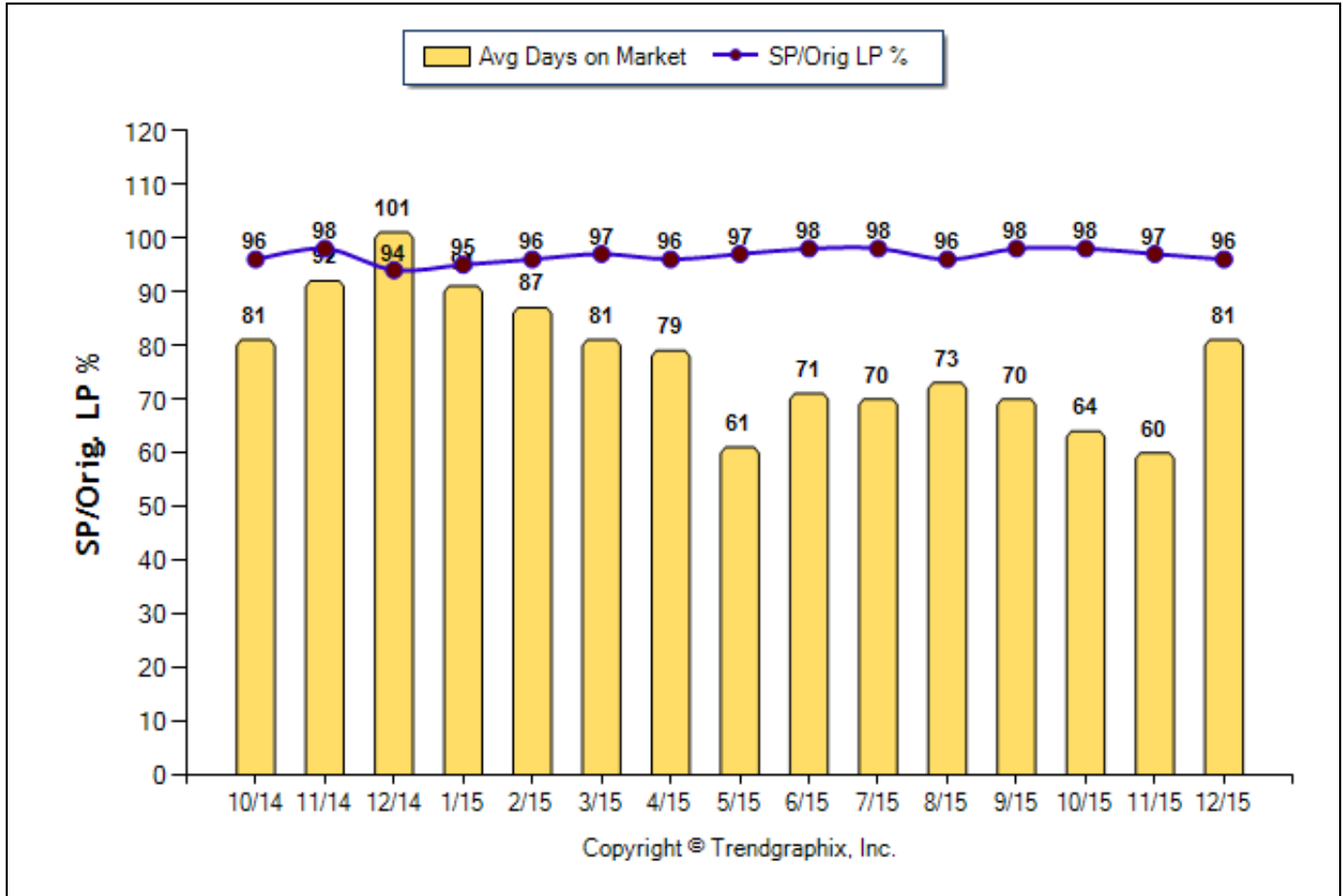
Facts and TrendsTM - Published January 2016*

Location: 9-Sumner County
Property Types: Site Built - Resale/Existing - All Properties - All Lot Sizes
Price Range: \$250,000 - \$349,999
Full Baths: 0 - No Limit

SQFT Range: 0 - No Limit
Half Baths: 0 - No Limit

Bedrooms: 0 - No Limit
Year Built: 0 - No Limit

Avg Days On Market & SP/Orig LP % (Oct. 2014 - Dec. 2015)



	Curnt vs. Prev Month			Curnt vs. Same Month 1 Yr Ago			Curnt vs. Same Qtr 1 Yr Ago		
	Dec. 15	Nov. 15	% Change	Dec. 15	Dec. 14	% Change	Oct. 15 to Dec. 15	Oct. 14 to Dec. 14	% Change
Days on Market	81	60	35% ▲	81	101	-19.8% ▼	68	90	-24.4% ▼
Sold/Orig LP Diff. %	96	97	-1% ▼	96	94	2.1% ▲	97	96	1% ▲

December 2015 Average Days on Market trend Remains Steady**

Average Days on Market in December 2015 is 81. It is up **35%** compared to the last month and down **19.8%** compared to the last year.

December 2015 Sold/Original List Price Ratio Remains Steady**

Sold/Original List Price % in December 2015 is 96%. It is down **1%** compared to the last month and up **2.1%** compared to the last year.

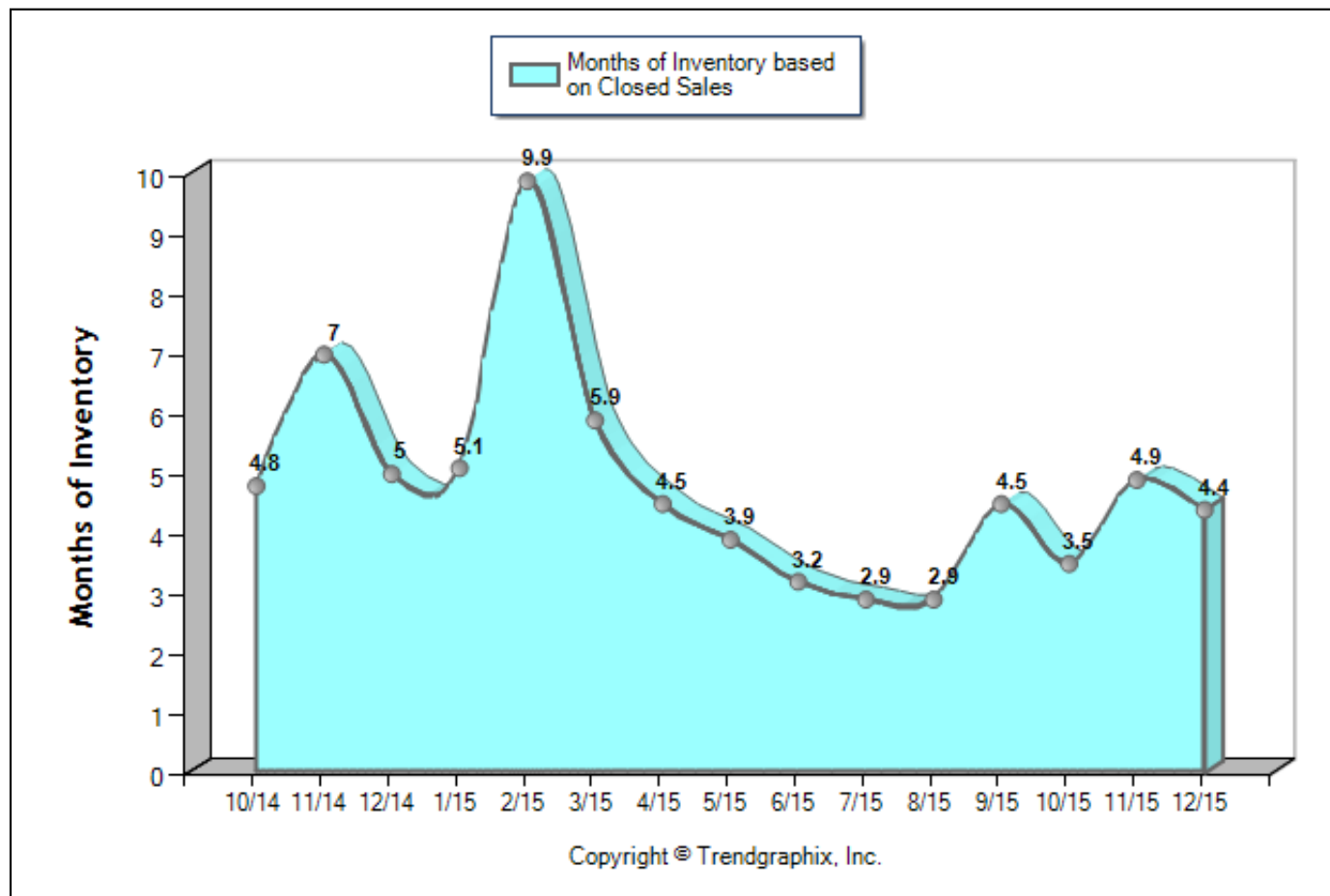
**Based on 6 month trend - Rising/Falling/Remains Steady.

All reports are published January 2016, based on data available at the end of December 2015. All reports presented are based on data supplied by the MTRMLS. MTRMLS does not guarantee or is not in anyway responsible for its accuracy. Data maintained by the MTRMLS may not reflect all real estate activities in the market. Information deemed reliable but not guaranteed.

Facts and TrendsTM - Published January 2016*

Location: 9-Sumner County
Property Types: Site Built - Resale/Existing - All Properties - All Lot Sizes
Price Range: \$250,000 - \$349,999
Full Baths: 0 - No Limit
SQFT Range: 0 - No Limit
Half Baths: 0 - No Limit
Bedrooms: 0 - No Limit
Year Built: 0 - No Limit

Months of Inventory Based on Closed Sales (Oct. 2014 - Dec. 2015)



	Currt vs. Prev Month			Currt vs. Same Month 1 Yr Ago			Currt vs. Same Qtr 1 Yr Ago		
	Dec. 15	Nov. 15	% Change	Dec. 15	Dec. 14	% Change	Oct. 15 to Dec. 15	Oct. 14 to Dec. 14	% Change
Months of Inventory (Closed Sales)	4.4	4.9	-10.3% ▼	4.4	5	-12% ▼	4.2	5.4	-22.2% ▼

December 2015 is a Neutral market**

Months of Inventory based on Closed Sales in December 2015 is 4.4. It is down **10.3%** compared to the last month and down **12%** compared to the last year.

**Buyer's market: more than 6 months of inventory based on closed sales. Seller's market: less than 3 months of inventory based on closed sales. Neutral market: 3 - 6 months of inventory based on closed sales.

All reports are published January 2016, based on data available at the end of December 2015. All reports presented are based on data supplied by the MTRMLS. MTRMLS does not guarantee or is not in anyway responsible for its accuracy. Data maintained by the MTRMLS may not reflect all real estate activities in the market. Information deemed reliable but not guaranteed.